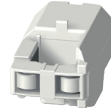


**TR-10**  
Ref. 4829 0555  
**iTR-10**  
Ref. 4829 0655



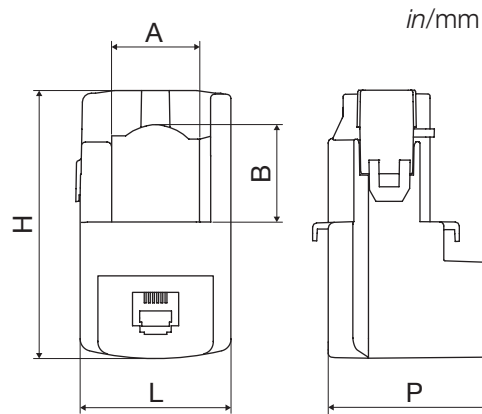
**TR-21**  
Ref. 4829 0557  
**iTR-21**  
Ref. 4829 0657



**TR-14**  
Ref. 4829 0556  
**iTR-14**  
Ref. 4829 0656



**TR-32**  
Ref. 4829 0558  
**iTR-32**  
Ref. 4829 0658



|                               | LxHxP                              | A          | B          | Recommended cable section | Window | I nom.     | I max. |
|-------------------------------|------------------------------------|------------|------------|---------------------------|--------|------------|--------|
| <b>TR-10</b><br><b>iTR-10</b> | 1.02 x 1.73 x 1.10<br>26 x 44 x 28 | -          | -          | -<br>6 mm <sup>2</sup>    | 10     | 25...63A   | 75.6A  |
| <b>TR-14</b><br><b>iTR-14</b> | 1.14 x 2.63 x 1.10<br>29 x 67 x 28 | 0.55<br>14 | 0.59<br>15 | -<br>10 mm <sup>2</sup>   | 14     | 40...160A  | 192A   |
| <b>TR-21</b><br><b>iTR-21</b> | 1.45 x 2.56 x 1.69<br>37 x 65 x 43 | 0.82<br>21 | 0.90<br>23 | -<br>50 mm <sup>2</sup>   | 21     | 63...250A  | 300A   |
| <b>TR-32</b><br><b>iTR-32</b> | 2.08 x 3.38 x 1.85<br>53 x 86 x 47 | 1.26<br>32 | 1.30<br>33 | -<br>50 mm <sup>2</sup>   | 32 *   | 160...600A | 720A   |

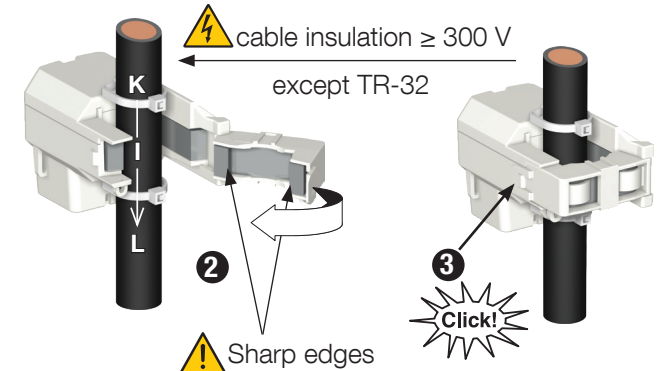
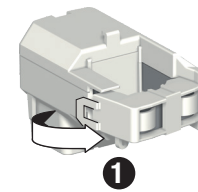
\*  $\square$  max = 1.18 x 0.98 in / 30 x 25 mm  
 $\varnothing$  max = 1.26 in / 32 mm



CORPORATE HQ CONTACT:  
SOCOMECSAS,  
1-4 RUE DE WESTHOUSE,  
67235 BENFELD, FRANCE

[www.socomec.com](http://www.socomec.com)  
To download, brochures, catalogues  
and technical manuals

1



2

DIRIS A-40/B-10/B-30  
DIRIS Digiware

⚠ Use Socomec RJ12 cables for connecting the current sensors

Although the contact surface of the core material has been waterproofed, it may still be susceptible to rust. Please use WD-40 or CRC5-56 to clean the contact surface in case of rust. When cleaning the core or housing, do not use any chemicals other than WD-40 or CRC5-56.

